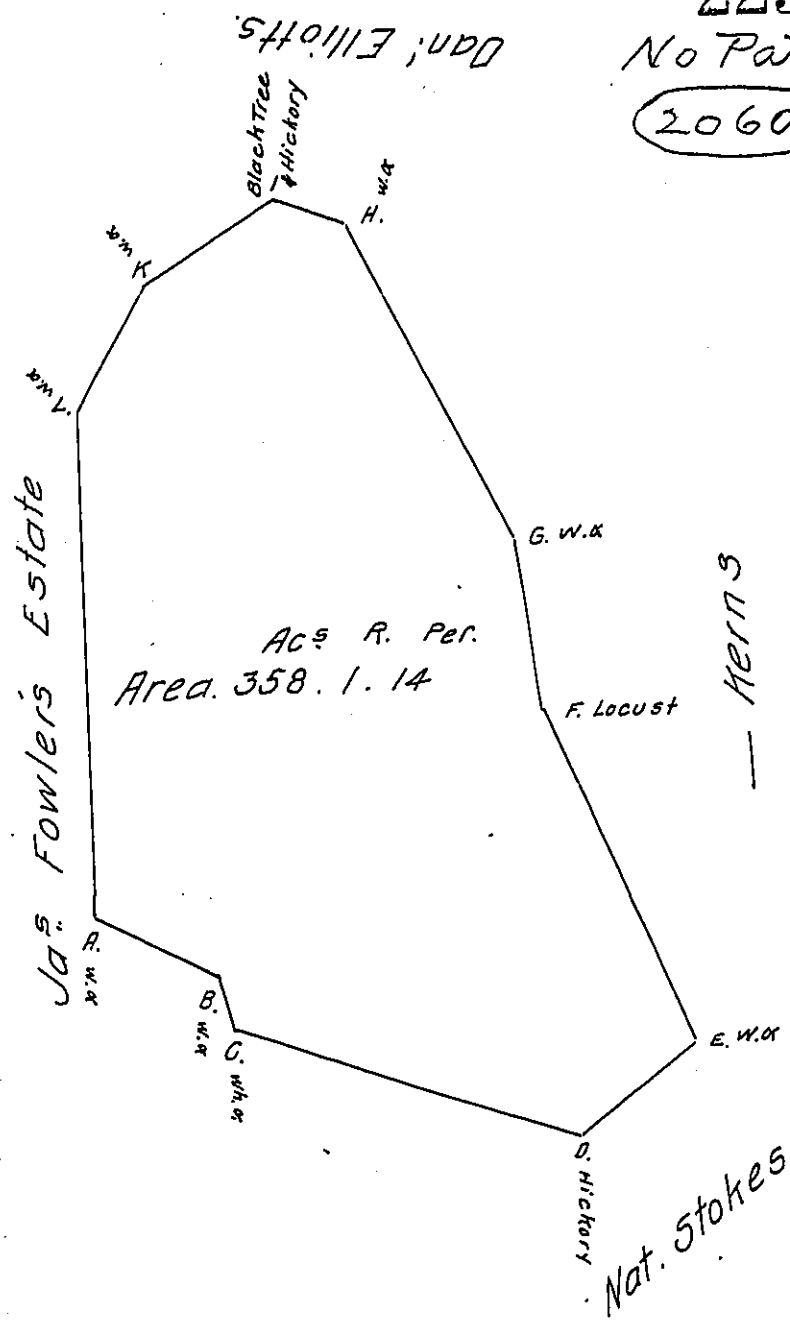


Beginning at a White Oak Corner  
to Jas. Fowler's Estate at A. thence

S<sup>o</sup> 65<sup>o</sup> E. 62 Perches to a White Oak at B.  
S<sup>o</sup> 16 1/2<sup>o</sup> E. 21 D<sup>o</sup>. to a White Oak C.  
S<sup>o</sup> 73<sup>o</sup> E. 163 D<sup>o</sup>. to a Hickory } D.  
Corner to Nat. Stokes

N<sup>o</sup> 53<sup>o</sup> E 65 to a White Oak E.  
N<sup>o</sup> 25<sup>o</sup> W 158 to a Locust F.  
N<sup>o</sup> 9<sup>o</sup> W 75 to a W. Oak near Kearn's G.  
N<sup>o</sup> 29<sup>o</sup> W 152 to a W. Oak on the great Road H.  
N<sup>o</sup> 72<sup>o</sup> W 31 to Black Tree & Small Hickory I.  
S<sup>o</sup> 59<sup>o</sup> W 71 D<sup>o</sup>. to a W. Oak K.  
S<sup>o</sup> 29<sup>o</sup> W 60 D<sup>o</sup>. to a W. Oak L.  
S<sup>o</sup> 2<sup>o</sup> E 215 D<sup>o</sup>. to the Beginning A.



The Above is a Draught of a Tract of Land lying on the Head of the  
Saw Mill Run called Raspberry Plains containing 358 Ac<sup>s</sup> 1 R<sup>d</sup> and 14  
Perches surveyed for Thomas Watson July 6<sup>th</sup> 1785. in pursuance of a  
Certificate obtained in his own Name from the Commissioners of Virginia  
for adjusting the Claims to unpatented Lands in the Counties of Monon-  
galia, Yoheogania and Ohio. which Certificate is mislaid but regularly  
entered in the Surveyor's Office of Yoheogania and to us transmitted  
from the Surveyor General's Office of this State.

Jn<sup>o</sup> Lukens Esq. -

Presley Nevill } D. Sur<sup>s</sup>  
Matt. Ritchie }

IN TESTIMONY that the above is a copy of the original remaining on file in  
the Department of Internal Affairs of Pennsylvania, made  
conformably to an Act of Assembly approved the 16th day of  
February, 1833, I have hereunto set my Hand and caused  
the Seal of said Department to be affixed at Harrisburg,  
this twenty third day of April 1908.

Henry Howell  
Secretary of Internal Affairs.